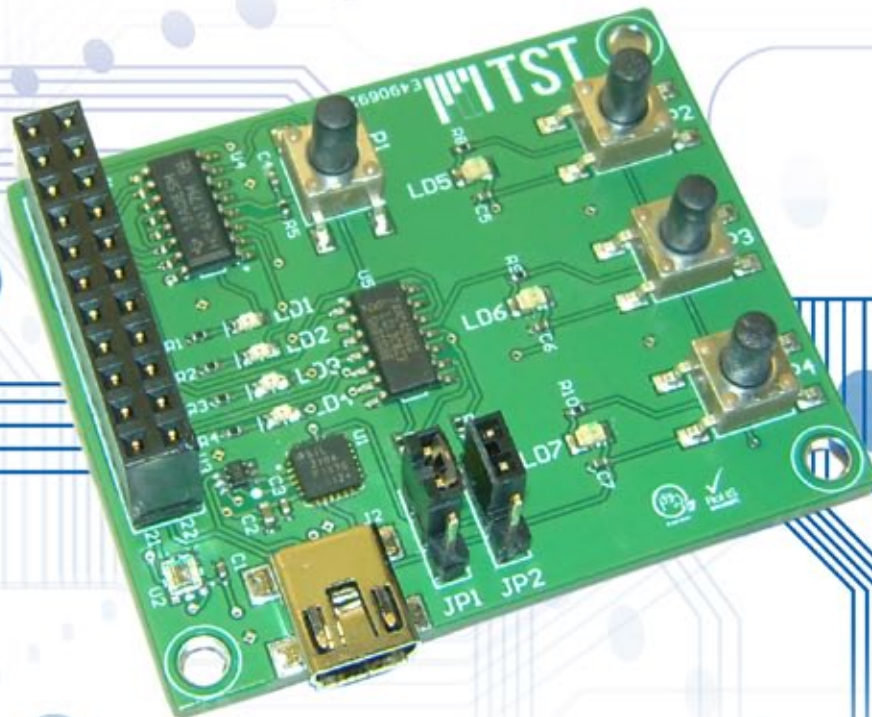


DEBUG BOARD

TSmart

DEBUGGING AND INITIATION BOARD



This board facilitates the first contact with the hardware and software of TSmart platform.

The board includes 3 GPIOs (dio0a, dio1a, dio7) with a button and a LED associated to each one of them, i.e. there are 3 buttons (P2, P3, P4) and 3 LEDs (LD5, LD6, LD7). The GPIOs can be set per software by the user to act as an input (i.e. buttons that generate events for the microcontroller) or an output (LED lights on/off). With the onboard APDS-9301 light sensor users can read real sensor values through the I2C interface.

The Debug board has 2 UARTs and a USB interface to connect with a hyperterminal software on a PC. With the P1 button, users can select the UART channel to be sniffed.

KEY FEATURES

Includes a USB interface to connect to PC

Visual Management through LEDs and Buttons.

I2C light sensor.

ELECTRICAL

Input voltage	3,7 - 4,5 VDC
Internal voltage	4,2 VDC
TX current	100 mA peak

MECHANICAL

Dimensions	52 x 43 mm
Connectors	22 pins male connector to TSmoTe / TSgaTe .
	22 pins male connector to another modules
	USB connector.

ENVIRONMENTAL

Operation temperature	-40°C / +85°C
Storage temperature	-40°C / +85°C
Certifications	CE, RoHS R&TTE, GCF-CC, FCC, PTCRB, China RTE,
	ICASA, Anatel, ATEX